



Prospective Employer Partners

January 2017



Our Mission



To empower lives impacted by foster care

Our Services



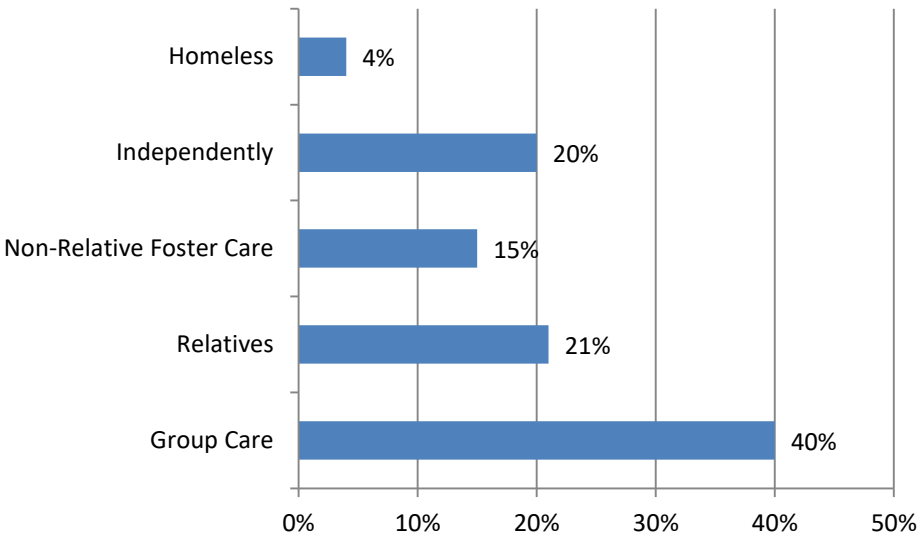
- **Foster Family Support Services**
- **ASPIRE** – Financial Capability & Asset Development
- **Real Connections** – Mentoring & Permanency
- **Teen Grant** – Normalcy and Well-Being
- **Works Wonders** – Employment Ed. & Training
- **YESS Aftercare** – Housing and Health Support

Recognized national leaders

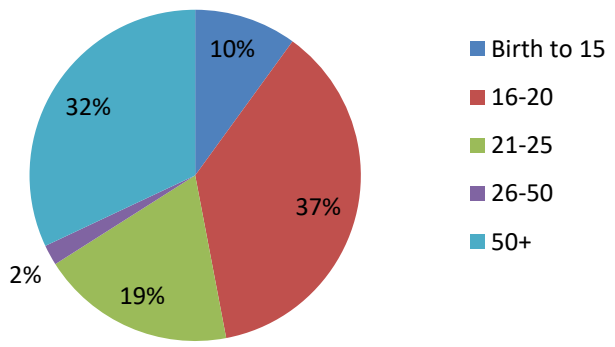
Population Served



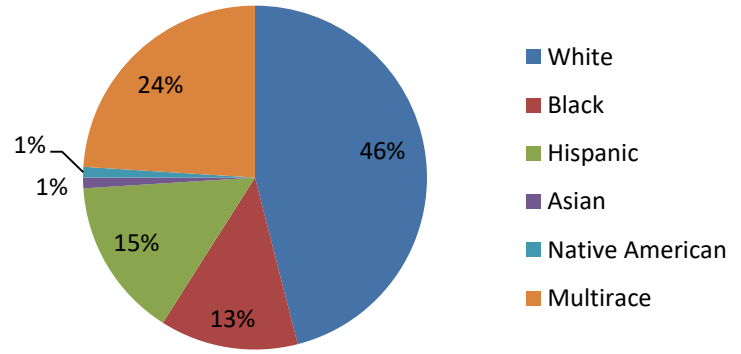
Living Arrangement for Youth



Age



Race / Ethnicity



4,000 children & families served in 2016

The Opportunity



To contribute to the development of foster youth while identifying potential new employees through a no cost intern program that could lead to long term employment

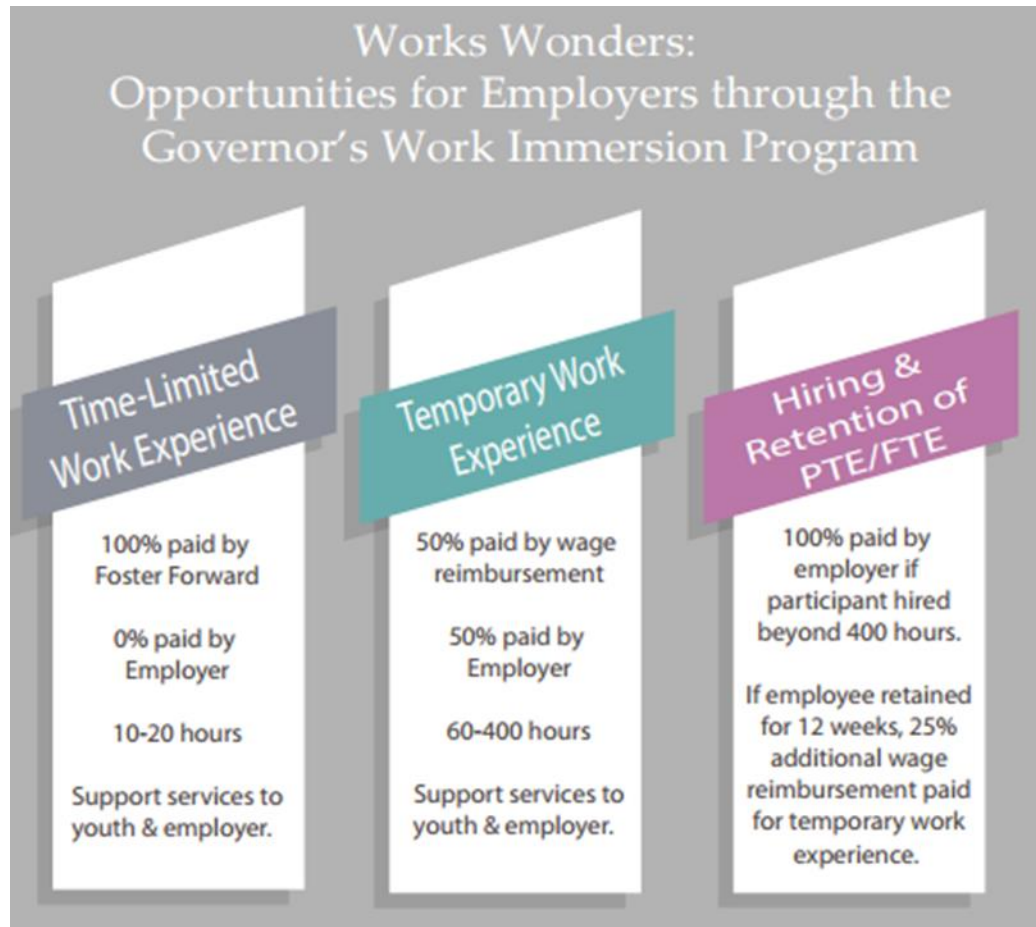
Foster Forward partnership helps bridge the skills gap

Foster Forward Support

- Classroom training on 20 career development competencies
- Individualized career coaching
- Peer Mentoring
- Adjacent training programs (ASPIRE)
- In-Kind services and resources for youth.
- Financial support for employers

Working together to provide opportunities for qualified employees

Program Phases



Structured to minimize cost (for employers) & strengthen experience

Participant Demographics

- 180 youth completed education training component.
 - 60% of all participants had never had a work experience.
- Results indicate:
 - More youth working,
 - Participants are staying in school,
 - Participants able to retain their jobs at higher rate and higher number of hours.
 - The most disconnected youth are successfully served and engaged in employment.

The program is working, but employment opportunities needed

Current Partner Examples



Questions?

For more information on Foster Forward or Works Wonders:

Kat Keenan

Deputy Director

Foster Forward

Kat.keenan@fosterforward.net

401-438-3900 x106

For more information on Works Wonders:

Bernadette Tavares

Works Wonder Program Coordinator

Foster Forward

Bernadette.tavares@fosterforward.net

401-438-3900 x120